

**MULBERRY STEPNEY GREEN
MATHS, COMPUTING & SCIENCE COLLEGE**

**BUSINESS CONTINUITY / CRITICAL
INCIDENT PLAN**

Ratified on: 12 June 2024

Ratified by: Full Governing Body

Date of next review: June 2025

Mulberry Stepney Green Maths Computing & Science College

BUSINESS CONTINUITY PLAN

PLAN DETAILS	
Date Written	
Plan Owner	Paramjit Bhutta
Plan Writer	Zumon Chowdhury
Version Number	1.02
Review Schedule	Annually
Date of Plan Review	
Date of Plan Exercise	

CONTENTS		
A	PLAN ACTIVATION	2
B	INCIDENT MANAGEMENT	5
C	BUSINESS CONTINUITY	7
D	RECOVERY AND RESUMPTION	10

This associated guidance has been designed to complement and enhance existing School procedures and guidance, such as those covering Educational Visits and Health and Safety in Education Premises. It does not supersede those procedures or any existing arrangements for contacting key partners and the Emergency Services during a critical incident.

As a user of the Business Continuity Plan you must familiarise yourself with the whole document upon receipt of it, and wherever necessary, raise any queries immediately with the Plan Owner.

1.0 PLAN PURPOSE AND SCOPE

Purpose	To provide a flexible framework to manage the response to any school disruption or emergency ¹ , maintain critical activities and recover from the incident quickly and efficiently.
Plan Scope	The following departments /sites are in scope of this plan: Stepney Green Maths & Computing College
Links to other Plans and Procedures	<ul style="list-style-type: none"> ■ The Business Continuity Plan may be activated in the event of a highly significant disruption impacting on school. Examples could include major ICT outage, pandemics, industrial action, natural disasters, terrorist attack etc. ■ In the event of a serious emergency, the School's emergency response arrangements may be activated alongside the School's Business Continuity Plan to enable the delivery of civil protection duties. ■ IT Business Continuity Plan operates alongside this document.

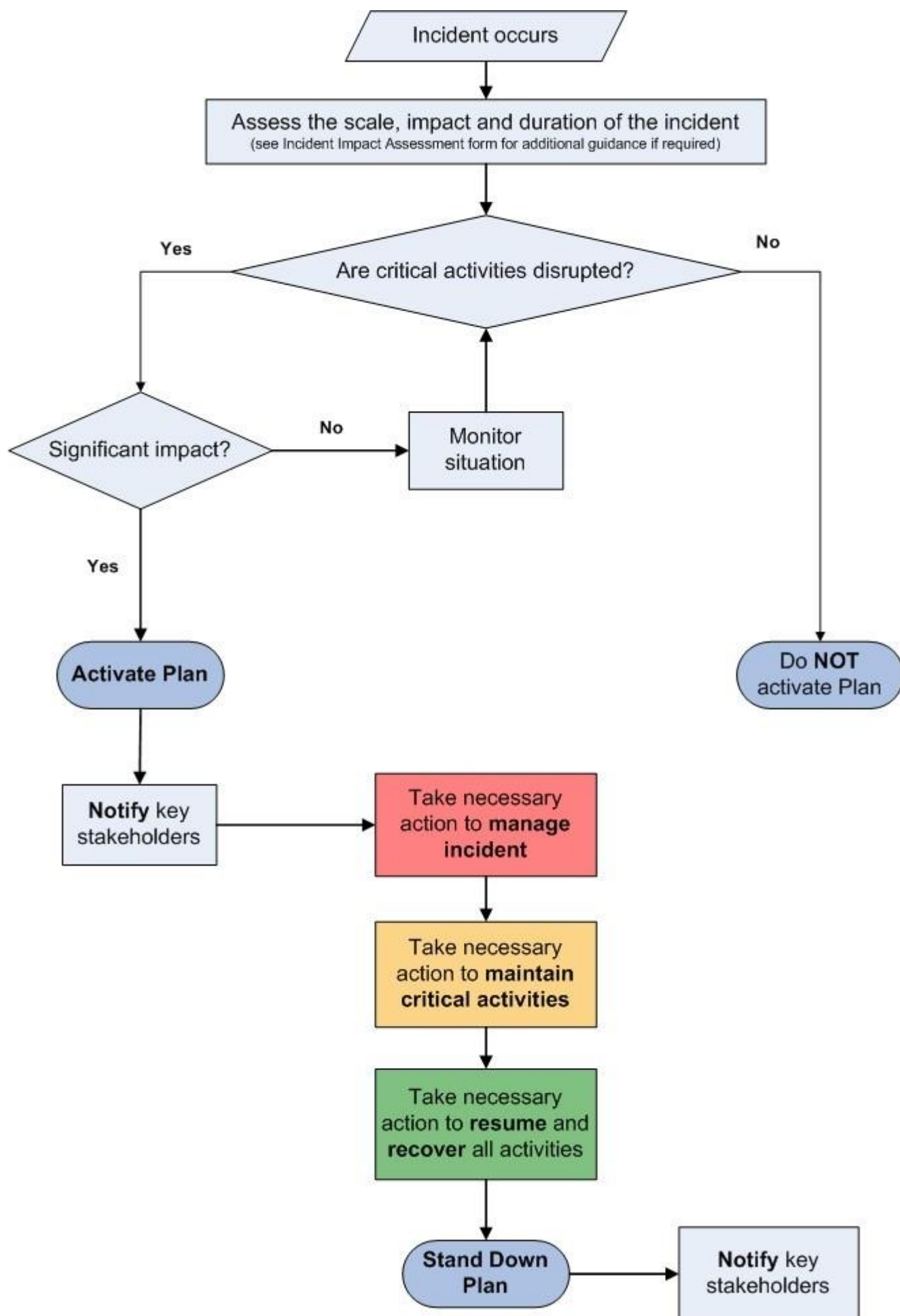
2.0 PLAN ACTIVATION

Circumstances	<p>This Plan will be activated to manage the response to any incident causing significant disruption to normal service delivery, particularly the delivery of key/time critical activities. Plan activation triggers may include:</p> <ul style="list-style-type: none"> ■ Loss of key people or skills e.g. above normal levels of absenteeism due to illness/injury or other scenarios such as severe weather, changes in service structures, major transport disruption, emergency response duties, or people leaving the organisation. ■ Loss of critical systems e.g. ICT network disruption, telephony outage, power outage, utilities disruption or third party supplier disruption. ■ Denial of access, or damage to, facilities e.g. loss of a building through fire or flood, an external emergency where emergency service cordon would prevent access for a period of time, utilities failure. You may also require the activation of continuity arrangements in the event of an office move. ■ Loss of a key resource such as an external supplier or partner vital to the delivery of a key service or activity. 	
Authority for Plan Activation (other than the Plan Owner)	<p>In the absence of the plan owner, the activation of the plan falls onto the:</p> <ul style="list-style-type: none"> • 1st Deputy Head teacher. 	
Notification Procedures	Who?	Why? <i>(note this is not an exhaustive list)</i>
	Headteacher	Take the decision on whether the Business Continuity Plan should be activated and direct resources. The Headteacher will normally be the 'Plan Owner' and therefore the Authority for plan activation. <i>See section 1.3 for more detail on plan activation.</i>
	Board of Trustees	Responsible for strategic decisions in response to significant incidents
	School Communications or Press Office	Support to develop your media strategy in the event of an incident that has the potential to attract negative media coverage or cause significant reputational damage to the School.
	Leadership Team	Directs the School's response to significant incidents affecting the ability of your school to continue providing its services. Leadership team to communicate information regarding plan with Staff, Parents and Students.
	Premesis	Provide support in an incident where the physical infrastructure has been impacted. They will activate other School Services and partner agencies/contractors as required.

2.0 PLAN ACTIVATION

	Trust Risk and Resilience Team	In the event of a major Business Continuity incident, the team will be available to offer practical advice and support to the school's management team.
	Stakeholders/ Partners	If the incident is causing significant disruption, an appropriate message should be released to stakeholders/partners detailing: <ul style="list-style-type: none">● What is causing the disruption and the impact● Action being taken to respond to the incident● Estimated length of the disruption and return to business as usual.

2.1 PLAN ACTIVATION PROCESS



3.0 INCIDENT MANAGEMENT

3.1 INCIDENT MANAGEMENT PHASE

Purpose	<ul style="list-style-type: none"> ■ Protect the safety and welfare of staff, visitors and the public ■ Protect vital assets e.g. equipment, data, reputation ■ Ensure urgent and necessary communication takes place ■ Support the Business Continuity phase ■ Support the Recovery and Resumption phase
----------------	--------------------------------------------------------------------------------------------------------------------------------------------------------------------------------------------------------------------------------------------------------------------------------------------------------------------------------------------------------------

If the disruption is not a 'no notice' emergency, section 4.0 will be of more relevance.

	REQUIREMENT	ACTION	ACTION DONE? <i>(Check box accordingly)</i>	BY WHO? <i>(Insert details of responsible Officer)</i>
1.	Make a <i>quick</i> initial assessment: <ul style="list-style-type: none"> ■ Survey the scene/situation ■ Assess the impact on pupils and staff ■ Assess (i.e. scale/severity, duration & impact) ■ Disseminate information (to others) ■ Call the Emergency Services if needed ■ Evacuate the school building if necessary 	Gather and share information to facilitate decision-making and enhance the response. <i>A full impact assessment form can be found in Schools Business Continuity Plan Guidance.</i>	<input type="checkbox"/>	
2.	Nominate individuals to carry out Incident Management roles, as appropriate.	Information on roles and responsibilities can be found in <i>Schools Business Continuity Plan Guidance.</i>	<input type="checkbox"/>	
3.	Ensure a log of key decisions and actions is started and maintained throughout the incident	The Log template can be found in <i>Schools Business Continuity Plan Guidance.</i>	<input type="checkbox"/>	
4.	Where appropriate, record names and details of any staff or pupils that may have been injured or affected by the incident as part of your incident record keeping.	This information should be held securely as it may be required by Emergency Services or other agencies during or following the incident.	<input type="checkbox"/>	
5.	Log details of all items lost by pupils, staff, visitors etc as a result of the incident, if appropriate	The Log template can be found in <i>Schools Business Continuity Plan Guidance.</i>	<input type="checkbox"/>	
6.	Assess the key priorities for the remainder of the working day and take relevant action	<p>Consider actions to ensure the health, safety and well-being of pupils, staff and the wider school community at all times. Consider your business continuity strategies, i.e. alternative ways of working, re-location to your recovery site etc to ensure the impact of the disruption is minimised.</p> <p>Consider the school's legal duty to provide school meals to some pupils and how this will be facilitated, even in the event of emergency school closure.</p> <p><i>Business Continuity Strategies are documented in Section 5.</i></p>	<input type="checkbox"/>	
7.	Log all expenditure incurred as a result of the incident and seek advice/inform your Insurance Company and Claims Team	Record all costs incurred as a result of responding to the incident. The Financial Expenditure Log can be found in <i>Schools Business Continuity Plan Guidance.</i>	<input type="checkbox"/>	
8.	Consider your communications strategy to ensure staff and pupils are kept informed about what is required of them. If the incident is taking place outside of normal working hours, staff may need to be	All staff member's emergency contact details should be held securely electronically as well as in a hard copy as part of your plan. Ensure parents/carers contact details are also available.	<input type="checkbox"/>	

	REQUIREMENT	ACTION	ACTION DONE? <i>(Check box accordingly)</i>	BY WHO? <i>(Insert details of responsible Officer)</i>
	contacted to advise of any alterations to normal working arrangements for the next day.	Contact lists are contained in <i>Schools Business Continuity Plan Guidance</i> .		
9.	Ensure recording processes are in place for staff/pupils leaving the site	Ensure the safety of staff and pupils before they leave the site and identify suitable risk control measures as required.	<input type="checkbox"/>	

4.0 BUSINESS CONTINUITY

4.1 BUSINESS CONTINUITY PHASE

Purpose	<ul style="list-style-type: none"> ■ To ensure that 'critical activities' are resumed as quickly as possible and/or continue to be delivered during the disruption ■ To activate one or more of your business continuity strategies to enable alternative ways of working ■ To make best use of potentially limited resources by suspending 'non critical' activities
Time Critical Service Functions	The outcome of the <i>Business Impact Analysis</i> process (see flow chart on page 4) has been to identify the following service activities as time critical/urgent:

	REQUIREMENT	ACTION	ACTION DONE? <i>(Check box accordingly)</i>	BY WHO? <i>(Insert details of responsible Officer)</i>
1.	Take time to understand and evaluate the impact of the incident on 'business as usual' activities by communicating with key stakeholders to gather information.	Depending on the incident, you may need additional/specific input in order to drive the recovery of critical activities. This may require the involvement of external partners.	<input type="checkbox"/>	
2.	Plan how critical activities will be maintained, utilising pre-identified or new business continuity strategies (see section 5.3 for the pre-identified strategies).	Consider: <ul style="list-style-type: none"> ■ Immediate and ongoing priorities ■ Communication strategies ■ Resource availability ■ Deployment of resources ■ Roles and responsibilities ■ Finance ■ Monitoring the situation ■ Reporting ■ Stakeholder engagement ■ Any welfare issues ■ Planning the recovery of non critical activities 	<input type="checkbox"/>	
3.	Identify any other stakeholders who may be required in the business continuity response	Depending on the incident, you may need additional/specific input in order to drive the recovery of critical activities; this may require the involvement of external partners. Refer to your key contacts list in the <i>Schools Business Continuity Plan Guidance</i> .	<input type="checkbox"/>	
4.	Log all decisions and actions, including what you decide not to do and include your decision making rationale.	The Log of Events, Decisions and Actions can be found in the <i>Schools Business Continuity Plan Guidance</i> .	<input type="checkbox"/>	
5.	Log all financial expenditure incurred as a result of the incident	Use the Financial Expenditure Log which can be found in the <i>Schools Business Continuity Plan Guidance</i> .	<input type="checkbox"/>	
6.	Deliver appropriate communication actions as required	Ensure methods of communication and messages are developed as appropriate to the needs of your key stakeholders e.g. Pupils, Staff, Partners/Carers, Trustees, Suppliers, Local Authority, Central Government Agencies etc.	<input type="checkbox"/>	

4.2 BUSINESS CONTINUITY STRATEGIES	
Purpose	<ul style="list-style-type: none"> ■ To document alternative ways of working designed to maintain critical activities in the event of a disruption ■ To ensure alternative ways of working have been agreed, tested and are fit for purpose
Circumstances when business continuity strategies may be activated	<p>Whatever the cause of disruption, the impacts will generally be one or more of the below categories:</p> <ul style="list-style-type: none"> ■ Loss of key people or skills e.g. above normal levels of absenteeism due to illness/injury or other scenarios such as severe weather, changes in service structures, major transport disruption, emergency response duties, people leaving the organisation etc ■ Loss of critical systems (<i>Refer to IT - Business continuity plan</i>) e.g. ICT network disruption, telephony outage, power outage, utilities disruption, third party supplier disruption etc ■ Denial of access, or damage to, facilities e.g. loss of a building through fire or flood, an external emergency where emergency service cordon would prevent access for a period of time, utilities failure etc. You may also require the activation of continuity arrangements in the event of an office move. ■ Loss of a key resource such as an external supplier or partner vital to the delivery of a key activity

TACTICAL OPTIONS TO MITIGATE AGAINST A LOSS OF PREMISES		ADDITIONAL INFORMATION
1.	<p>Identification of alternative locations designated as the agreed 'work area recovery site'. Need to consider transport requirements and accessibility for these identified premises. Need to have multiple places agreed for work area recovery if there is large premises and these different options will need to be documented.</p> <p>You may find it helpful to categorise available sites according to the following:</p> <ul style="list-style-type: none"> ■ 'cold' sites - has no equipment/furniture/computer systems set up but can be re-fitted in the event it is needed. This obviously means it takes longer to make 'fit for purpose' following an incident. ■ 'warm' sites - usually these sites will have hardware and connectivity already established though may take some time to be fit for purpose. ■ 'hot' sites - is essentially a duplicate of the original site, with full computer systems as well as near complete back-up of user data, but may not match the capacity of the original site. 	
2.	<p>Creating an emergency 'grab bag' that contains essential information and equipment needed for both incident management and business continuity, and should be stored in a secure place on and off site. The contents of the bag should be the responsibility of a named person and should be regularly checked and updated. See <i>Schools Business Continuity Plan Guidance</i>.</p>	
3.	<p>Mutual support agreements with schools where there is capacity for schools to accommodate each other in the event of an incident.</p>	
4.	<p>Virtual learning environment opportunities (Frog and Zoom)</p>	
5.	<p>Localising the incident, e.g. isolating the problem and utilising different sites or areas within the school premises portfolio</p>	
6.	<p>Off site activities e.g. physical activities, school trips</p>	

TACTICAL OPTIONS TO MITIGATE AGAINST A LOSS OF CRITICAL ICT SYSTEMS (INCLUDING TELEPHONY) – <i>Refer to IT Business Continuity Plan</i>		ADDITIONAL INFORMATION
1.	<p>Flexible lesson plans</p>	
2.	<p>Use of a secure external network, virtualised network or secure cloud that can be accessed via the internet to allow extra back up and protection for your files</p>	
3.	<p>Manual workarounds: ensure there is a record of where pre-printed forms etc are stored and that there are procedure guides to inform their use where necessary</p>	
4.	<p>Access systems via the internet outside of your network for secure, cloud based applications.</p>	
5.	<p>Ensure that anyone who requires ICT to undertake critical activities has the Ability to work at home where possible and appropriate. Ensure that critical equipment is taken home where practical and possible and consider procuring</p>	

	mobile equipment for these users.	
6.	Using different ways of working. This could include: changing work patterns, suspending 'non critical' activities to focus on your priorities and assist the recovery of critical systems in the first instance with a phased approach for all other ICT 'non critical' activities.	
TACTICAL OPTIONS TO MITIGATE AGAINST A LOSS OF STAFF OR SKILLS		ADDITIONAL INFORMATION
1.	Use of temporary staff (teaching/non teaching)	
2.	Multi-skilling/cross training to ensure staff can undertake different roles and responsibilities. This could involve identifying deputies /job shadowing/staff undertaking temporary additional duties	
3.	Using different ways of working to allow for a reduced workforce. This could include: Use of pre-prepared educational materials that allow for independent learning Team activities and sports to accommodate larger numbers of pupils at once Larger class sizes (subject to relevant ratios) Virtual learning environment opportunities	
4.	Suspending 'non-critical' activities to focus on your priorities	
5.	Using mutual support agreements with other schools to focus on your priorities	
6.	Ensuring that the business continuity aspects of staff management are considered in all management arrangements, e.g. managing attendance, job descriptions, contractual requirements etc.	
TACTICAL OPTIONS TO MITIGATE AGAINST A LOSS OF A KEY SUPPLIER, THIRD PARTY OR PARTNER AGENCY		ADDITIONAL INFORMATION
1.	Pre-identified alternative suppliers	
2.	Ensuring all external providers have a Business Continuity Plan in place and you understand the impact to their plan on the delivery of your critical activities in the event of an incident	
3.	Insurance cover	
4.	Using mutual support agreements with other schools	
5.	Using alternative ways of working to mitigate the loss, e.g. suspending activities.	

5.0 RECOVERY AND RESUMPTION

5.0 RECOVERY AND RESUMPTION PHASE

Purpose	<ul style="list-style-type: none"> ■ To return to 'business as usual' as quickly as possible ■ To ensure any non critical activities suspended as part of your business continuity response are recovered within appropriate timescales ■ Where the impact of the incident is prolonged, normal operations may need to be delivered under new circumstances e.g. from a different building on a longer term basis.
----------------	-----------------------------------------------------------------------------------------------------------------------------------------------------------------------------------------------------------------------------------------------------------------------------------------------------------------------------------------------------------------------------------------------------------------------------------------------------

	REQUIREMENT	ACTION	ACTION DONE? <i>(Check box accordingly)</i>	BY WHO? <i>(Insert details of responsible Officer)</i>
1.	Agree and plan the actions required to enable recovery and resumption of normal working practises	Agreed actions will be detailed in an action plan and set against timescales with responsibility for completion clearly indicated.	<input type="checkbox"/>	
2.	Continue to record all expenditure incurred as a result of the incident	Use the Financial Expenditure Log to record any expenditure which can be found in the <i>Schools Business Continuity Plan Guidance</i>	<input type="checkbox"/>	
3.	Respond to any ongoing and long term support needs of Staff and Pupils.	Depending on the nature of the incident, the schools Incident Management Team may need to consider the use of health services, for example counselling.	<input type="checkbox"/>	
4.	Once recovery and resumption actions are complete, communicate the return to 'business as usual'.	Ensure all staff are aware that the Business Continuity Plan is no longer in effect.	<input type="checkbox"/>	
5.	Carry out a 'debrief' of the incident with Staff and Suppliers/Partners if appropriate. Complete a post incident report to document opportunities for improvement and any lessons identified.	The incident de-brief report should be reviewed by all members of the Schools Incident Management Team to ensure that key actions resulting from the incident are implemented within designated timescales.	<input type="checkbox"/>	
6.	Review this Business Continuity Plan in light of lessons learned from the incident and the consequent response to it	Implement recommendations for improvement and update this Plan.	<input type="checkbox"/>	